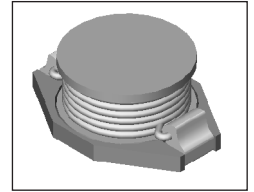


SMT Power Inductor

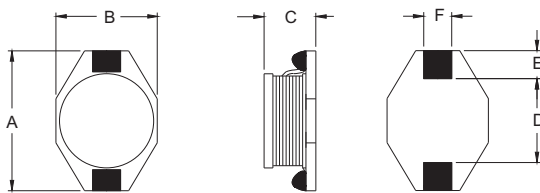
SISH83 Type

Features

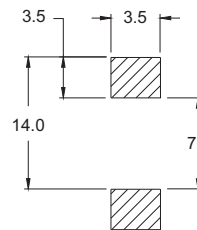
- RoHS compliant.
- Low profile (3.0mm max. height) SMD type.
- Unshielded, suitable for high density mounting.
- High energy storage and low DCR.
- Provided with embossed carrier tape packing.
- Ideal for power source circuits, DC-DC converter, DC-AC inverters inductor application.
- In addition to the standard versions shown here, customized inductors are available to meet your exact requirements.



Mechanical Dimension:



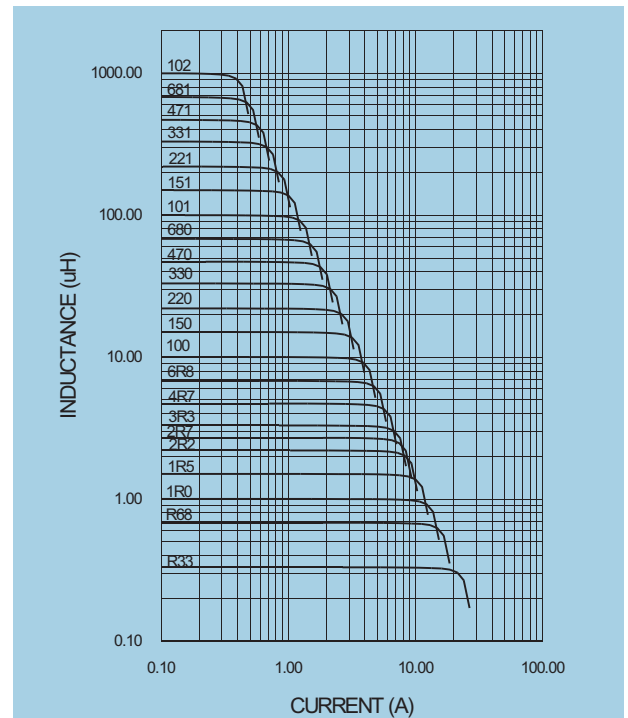
RECOMMENDED PAD PATTERNS



UNIT:mm/inch
 A = 12.94 / 0.510 Max.
 B = 9.4 / 0.370 Max.
 C = 3.0 / 0.118 Max.
 D = 7.7±0.2 / 0.303±0.008
 E = 2.5±0.2 / 0.098±0.008
 F = 2.5±0.2 / 0.098±0.008

Electrical Characteristics: 25°C: 100KHz, 0.1V

| PART NO. | L ¹ (uH) | DCR (Ω)MAX | Isat ² (A dc) | I _r ³ (A dc) |
|--------------|------------------------|---------------|-----------------------------|---------------------------------------|
| SISH83 - 100 | 10 | 0.090 | 2.4 | 2.00 |
| SISH83 - 150 | 15 | 0.120 | 2.0 | 1.50 |
| SISH83 - 200 | 22 | 0.190 | 1.6 | 1.30 |
| SISH83 - 330 | 33 | 0.250 | 1.4 | 1.10 |
| SISH83 - 470 | 47 | 0.320 | 1.0 | 0.80 |
| SISH83 - 680 | 68 | 0.550 | 0.9 | 0.70 |
| SISH83 - 101 | 100 | 0.700 | 0.7 | 0.60 |
| SISH83 - 151 | 150 | 1.000 | 0.6 | 0.50 |
| SISH83 - 221 | 220 | 1.600 | 0.5 | 0.40 |
| SISH83 - 331 | 330 | 2.200 | 0.4 | 0.30 |
| SISH83 - 471 | 470 | 3.300 | 0.3 | 0.20 |
| SISH83 - 681 | 680 | 4.400 | 0.2 | 0.10 |
| SISH83 - 102 | 1000 | 7.000 | 0.1 | 0.05 |



1. Tolerance of inductance: ±20%.
2. Isat is the DC current which cause the inductance drop less than 10% of its nominal inductance without current.
3. Ir is the DC current which cause the surface temperature of the part increase less than 45°C.
4. Operating temperature : -20°C to 105°C (including self-temperature rise)



DELTA ELECTRONICS, INC.

(TAOYUAN PLANT CPBG) 252, SAN YING ROAD, KUEISAN INDUSTRIAL ZONE, TAOYUAN SHIEN, 333, TAIWAN, R.O.C.

TEL: 886-3-3591968; FAX: 886-3-3591991

http://www.deltawww.com